



To Our Valued Customers,

American Metals Supply, LLC. is a growing Metals Distributor located in Tampa, FL who specializes on Aluminum Extrusions, both standard and custom, as well as Aluminum Sheet and light plate. In addition, we also stock Stainless Steel.

American Metals Supply, LLC. was formed by a highly experienced group with many years of exposure to the Florida Aluminum Market. We have developed systems and controls to ensure that your material requirements are met as agreed. We take our pride in "doing what we say."

Our goal is to provide excellent service and quality at a fair price. We also strive to provide flexibility in order to meet our customer's needs.

This catalog is a guide to the products currently stocked. However, our inventory is continuously growing. If you need a product not listed in our catalog, please call us for your current availability.

Call and let us service your needs! Allow us to show you how our many years of experience, quality, wide variety of inventory and excellent on-time delivery can service your needs

We appreciate the opportunity to serve you. We will work hard today and continue our never ending quest for improvement so that we can continue to earn your business in the future!

Thank you,

All Employees of American Metals Supply, LLC.

Extrusion
1/2x1 Open Back

| | |
|--------|---------------------------|
| 600005 | 1/2x1x.045 OBS 24' White |
| 610005 | 1/2x1x.045 OBS 24' Bronze |

1/2x2 Open Back

| | |
|--------|---------------------------|
| 600000 | 1/2x2x.045 OBS 24' White |
| 610000 | 1/2x2x.045 OBS 24' Bronze |

1x2 Open Back

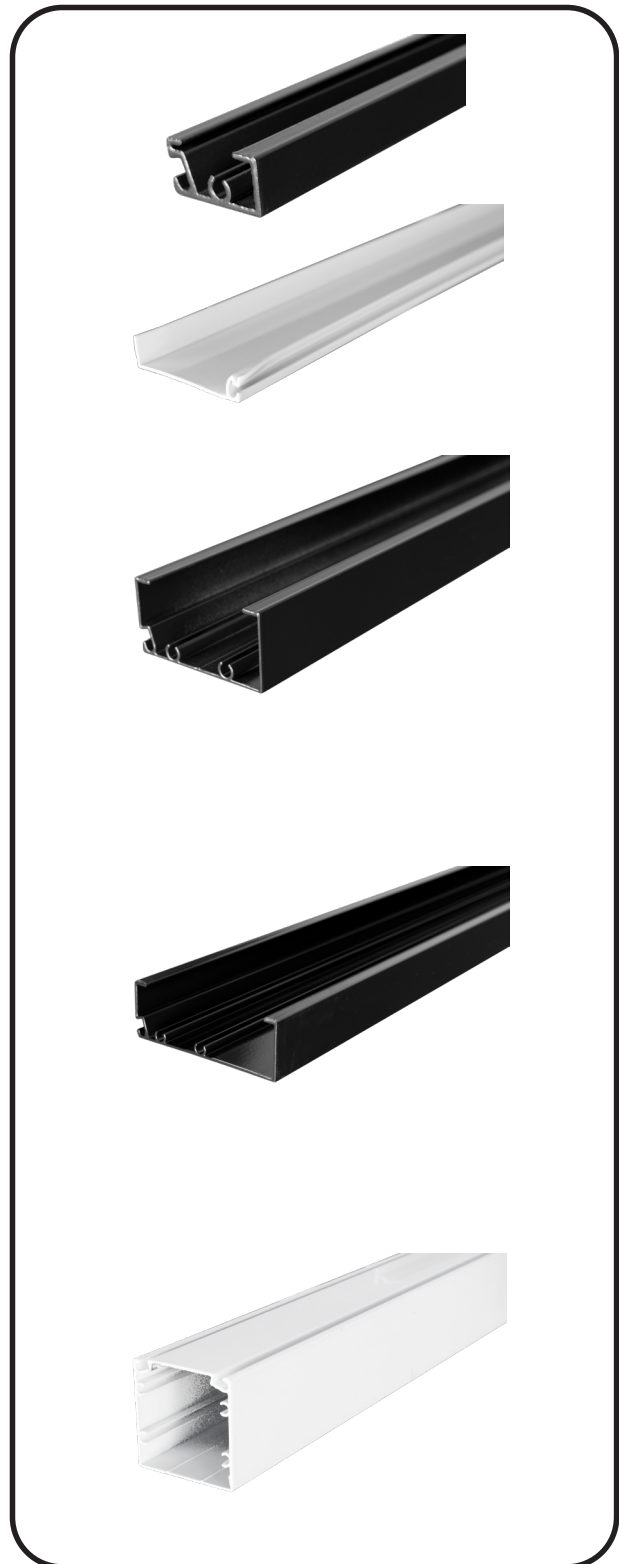
| | |
|--------|------------------------------|
| 610001 | 1x2x.040 OBS FS 19'6" Bronze |
| 600003 | 1x2x.040 OBS FS 21' White |
| 610003 | 1x2x.040 OBS FS 21' Bronze |
| 600004 | 1x2x.040 OBS FS 24' White |
| 610004 | 1x2x.040 OBS FS 24' Bronze |
| 600009 | 1x2x.040 OBS FS 30' White |
| 610009 | 1x2x.040 OBS FS 30' Bronze |

1x3 Open Back

| | |
|--------|----------------------------|
| 600035 | 1x3x.044 OBS FS 24' White |
| 610035 | 1x3x.044 OBS FS 24' Bronze |
| 600036 | 1x3x.044 OBS FS 30' White |
| 610036 | 1x3x.044 OBS FS 30' Bronze |

2x2 Hollow

| | |
|--------|-----------------------------|
| 600012 | 2x2x.040 HS FS 19'6" White |
| 610012 | 2x2x.040 HS FS 19'6" Bronze |
| 600013 | 2x2x.040 HS FS 21' White |
| 610013 | 2x2x.040 HS FS 21' Bronze |
| 600014 | 2x2x.040 HS FS 24' White |
| 610014 | 2x2x.040 HS FS 24' Bronze |
| 600019 | 2x2x.040 HS FS 30' White |
| 610019 | 2x2x.040 HS FS 30' Bronze |



Extrusion**1x2 Self Mating Snap FS-**

600109 1x2x.045 SMS 25' White
610109 1X2x.045 SMS 25' Bronze

1x3 Self Mating Snap FS-

610113 1x3x.045 SMS 20' Bronze
600114 1x3x.045 SMS 25' White
610114 1X3x.045 SMS 25' Bronze

1x4 Self Mating Snap FS-

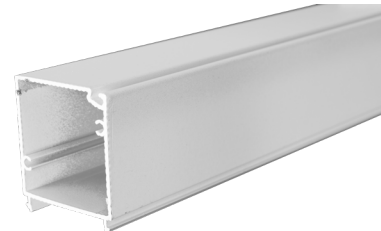
600134 1x4x.045 SMS 25' White
610134 1x4x.045 SMS 25' Bronze

1x2 Female Perimeter Snap-

600025 1x2x.044 Female Snap 24' White
610025 1X2x.044 Female Snap 24' Bronze

2x2 Male Perimeter Snap-

600030 2x2x.044 Male Snap 24' White
610030 2X2x.044 Male Snap 24' Bronze



Extrusion**2x.093" Square Tube:**

95142 2x.093 Square Tube 26' White
95143 2x.093 Square Tube 26' Bronze

3x.093" Square Tube:

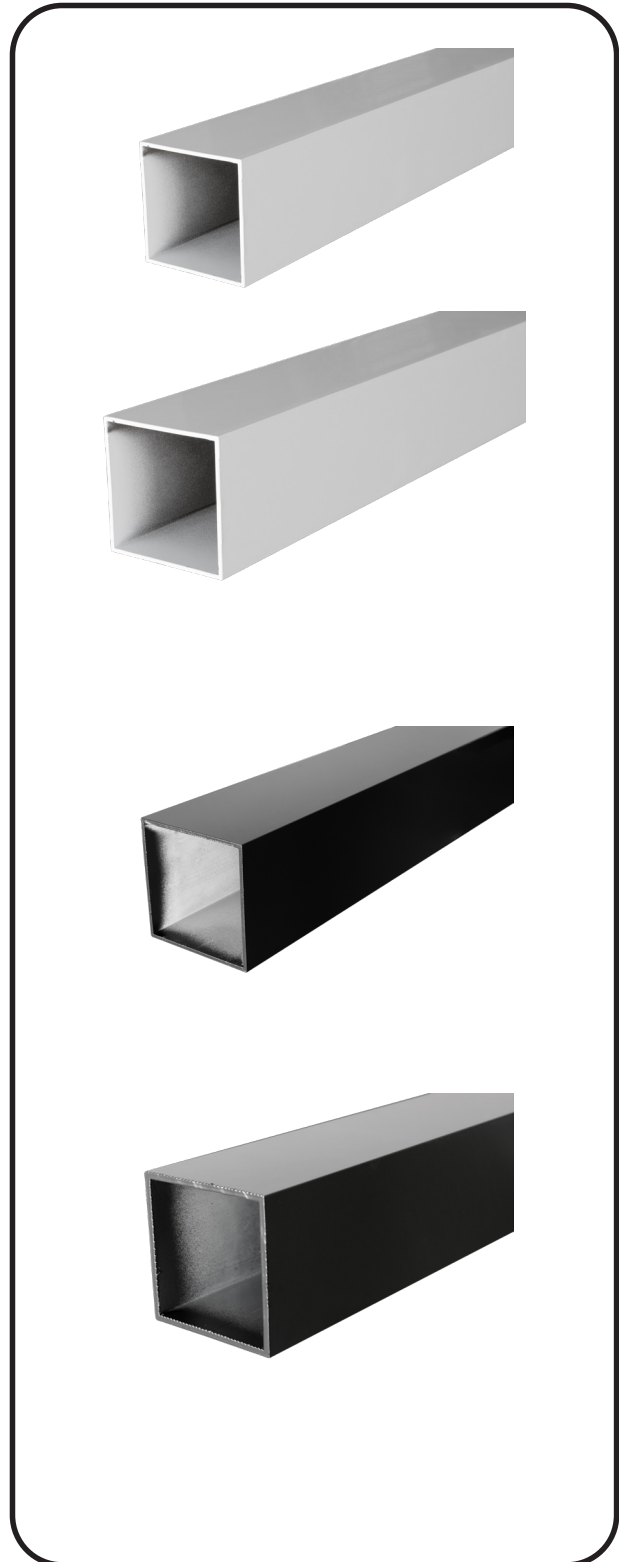
600330 3x.093 Square Tube 24' White
610330 3x.093 Square Tube 24' Bronze
600335 3x.093 Square Tube 30' White
610335 3x.093 Square Tube 30' Bronze

3x.125" Square Tube:

600340 3x.125 Square Tube 24' White
610340 3x.125 Square Tube 24' Bronze
600345 3x.125 Square Tube 30' White
610345 3x.125 Square Tube 30' Bronze

4x.125" Square Tube:

600342 4x.125 Square Tube 24' White
610342 4x.125 Square Tube 24' Bronze
600347 4x.125 Square Tube 30' White
610347 4x.125 Square Tube 30' Bronze



Extrusion
2x3 Post

| | |
|--------|-----------------------------|
| 610041 | 2x3x.045 Post FS 21' Bronze |
| 600040 | 2x3x.045 Post FS 24' White |
| 610040 | 2x3x.045 Post FS 24' Bronze |
| 600045 | 2x3x.045 Post FS 30' White |
| 610045 | 2x3x.045 Post FS 30' Bronze |

2x3 Special Post

| | |
|--------|----------------------------------|
| 600050 | 2x3x.045 Post Special 24' White |
| 610050 | 2x3x.045 Post Special 24' Bronze |
| 600055 | 2x3x.045 Post Special 30' White |
| 610055 | 2x3x.045 Post Special 30' Bronze |

3x2 Post

| | |
|--------|--------------------------|
| 600060 | 3x2x.045 Post 24' White |
| 610060 | 3x2x.045 Post 24' Bronze |
| 600065 | 3x2x.045 Post 30' White |
| 610065 | 3x2x.045 Post 30' Bronze |

3x3 Special Post

| | |
|--------|----------------------------------|
| 600092 | 3x3x.045 Special Post 24' White |
| 610092 | 3x3x.045 Special Post 24' Bronze |
| 600094 | 3x3x.045 Special Post 30' White |
| 610094 | 3x3x.045 Special Post 30' Bronze |

4x4 2 Spline

| | |
|--------|-------------------------------|
| 610088 | 4x.125 Post w/2SPG 24' Bronze |
| 600089 | 4x.125 Post w/2SPG 30' White |
| 610089 | 4x.125 Post w/2SPG 30' Bronze |

4x4 3 Spline

| | |
|--------|-------------------------------|
| 600096 | 4x.125 Post w/3SPG 24' White |
| 610096 | 4x.125 Post w/3SPG 24' Bronze |
| 600098 | 4x.125 Post w/3SPG 30' White |
| 610098 | 4x.125 Post w/3SPG 30' Bronze |

6x6 3 Spline

| | |
|--------|-------------------------------|
| 600070 | 6x.125 Post w/3SPG 24' White |
| 610070 | 6x.125 Post w/3SPG 24' Bronze |
| 600099 | 6x.125 Post w/3SPG 30' White |
| 610099 | 6x.125 Post w/3SPG 30' Bronze |



Extrusion**3x.045 Extruded Header**

| | |
|--------|------------------------------|
| 600320 | 3x.045 Ext Header 24' White |
| 610320 | 3x.045 Ext Header 24' Bronze |
| 600325 | 3x.045 Ext Header 30' White |
| 610325 | 3x.045 Ext Header 30' Bronze |

2x4x.050 Post

| | |
|--------|--------------------------|
| 600080 | 2x4x.050 Post 24' White |
| 610080 | 2x4x.050 Post 24' Bronze |
| 600085 | 2x4x.050 Post 30' White |
| 610085 | 2x4x.050 Post 30' Bronze |

2x5x.050 Post

| | |
|--------|--------------------------|
| 600082 | 2x5x.050 Post 24' White |
| 610082 | 2x5x.050 Post 24' Bronze |
| 600087 | 2x5x.050 Post 30' White |
| 610087 | 2x5x.050 Post 30' Bronze |

Scallop Tube

| | |
|--------|----------------------------|
| 600350 | 3" Scallop Tube 8' White |
| 610350 | 3" Scallop Tube 8' Bronze |
| 600351 | 3" Scallop Tube 9' White |
| 610351 | 3" Scallop Tube 9' Bronze |
| 600352 | 3" Scallop Tube 10' White |
| 610352 | 3" Scallop Tube 10' Bronze |
| 600353 | 3" Scallop Tube 24' White |
| 610353 | 3" Scallop Tube 24' Bronze |
| 600354 | 3" Scallop Tube 30' White |
| 610354 | 3" Scallop Tube 30' Bronze |



Extrusion
E-Gutter

| | |
|--------|---------------------|
| 600220 | E-Gutter 24' White |
| 610220 | E-Gutter 24' Bronze |
| 600225 | E-Gutter 30' White |
| 610225 | E-Gutter 30' Bronze |

E-Fascia

| | |
|--------|---------------------|
| 600260 | E-Fascia 27' White |
| 610260 | E-Fascia 27' Bronze |

5" Super Gutter

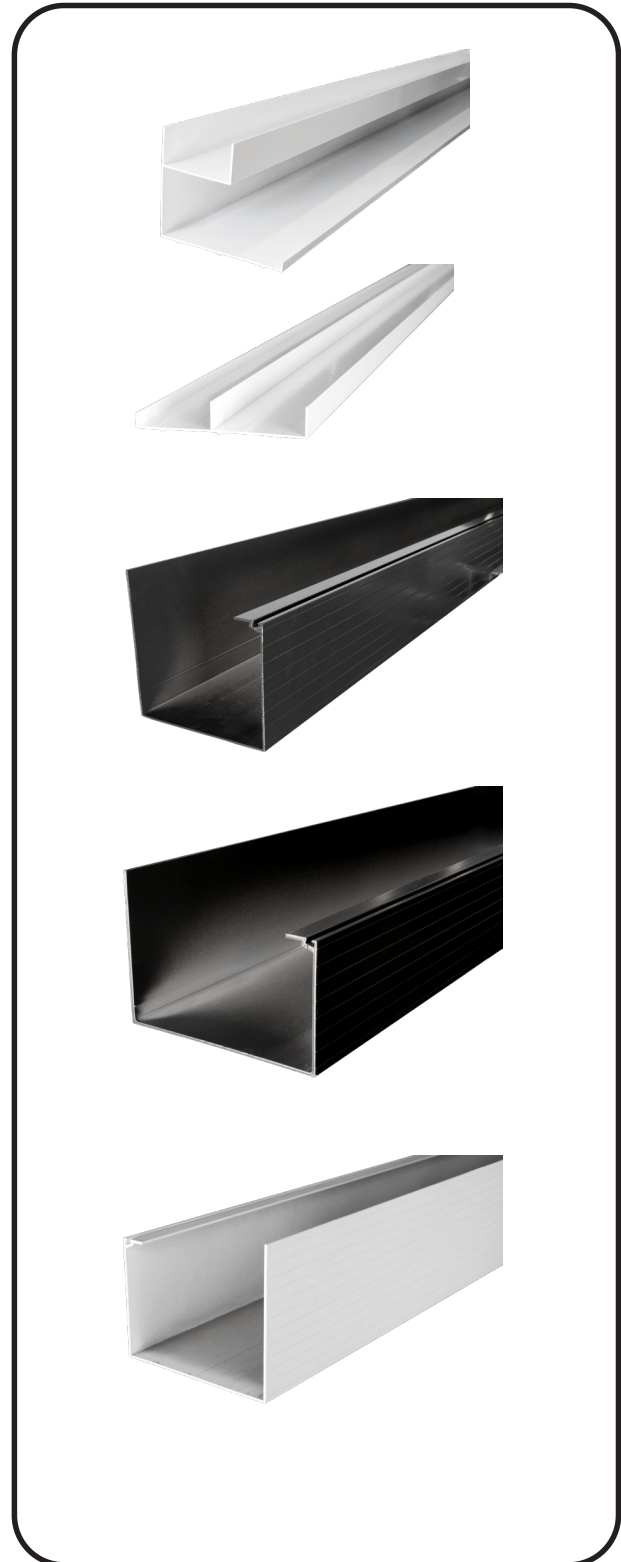
| | |
|--------|----------------------------|
| 600230 | 5" Super Gutter 24' White |
| 610230 | 5" Super Gutter 24' Bronze |
| 600235 | 5" Super Gutter 30' White |
| 610235 | 5" Super Gutter 30' Bronze |
| 610236 | 5" Super Gutter 36' Bronze |
| 600238 | 5" Super Gutter 40' White |
| 610238 | 5" Super Gutter 40' Bronze |

7" Light Super Gutter

| | |
|--------|----------------------------------|
| 600246 | 7" Super Gutter Light 24' White |
| 610246 | 7" Super Gutter Light 24' Bronze |
| 600247 | 7" Super Gutter Light 30' White |
| 610247 | 7" Super Gutter Light 30' Bronze |
| 600249 | 7" Super Gutter Light 36' White |
| 610249 | 7" Super Gutter Light 36' Bronze |
| 600248 | 7" Super Gutter Light 40' White |
| 610248 | 7" Super Gutter Light 40' Bronze |

7" Heavy Super Gutter

| | |
|--------|----------------------------------|
| 600250 | 7" Super Gutter Heavy 24' White |
| 610250 | 7" Super Gutter Heavy 24' Bronze |
| 600255 | 7" Super Gutter Heavy 30' White |
| 610255 | 7" Super Gutter Heavy 30' Bronze |
| 600258 | 7" Super Gutter Heavy 40' White |
| 610258 | 7" Super Gutter Heavy 40' Bronze |



Extrusion
Receiving Channel

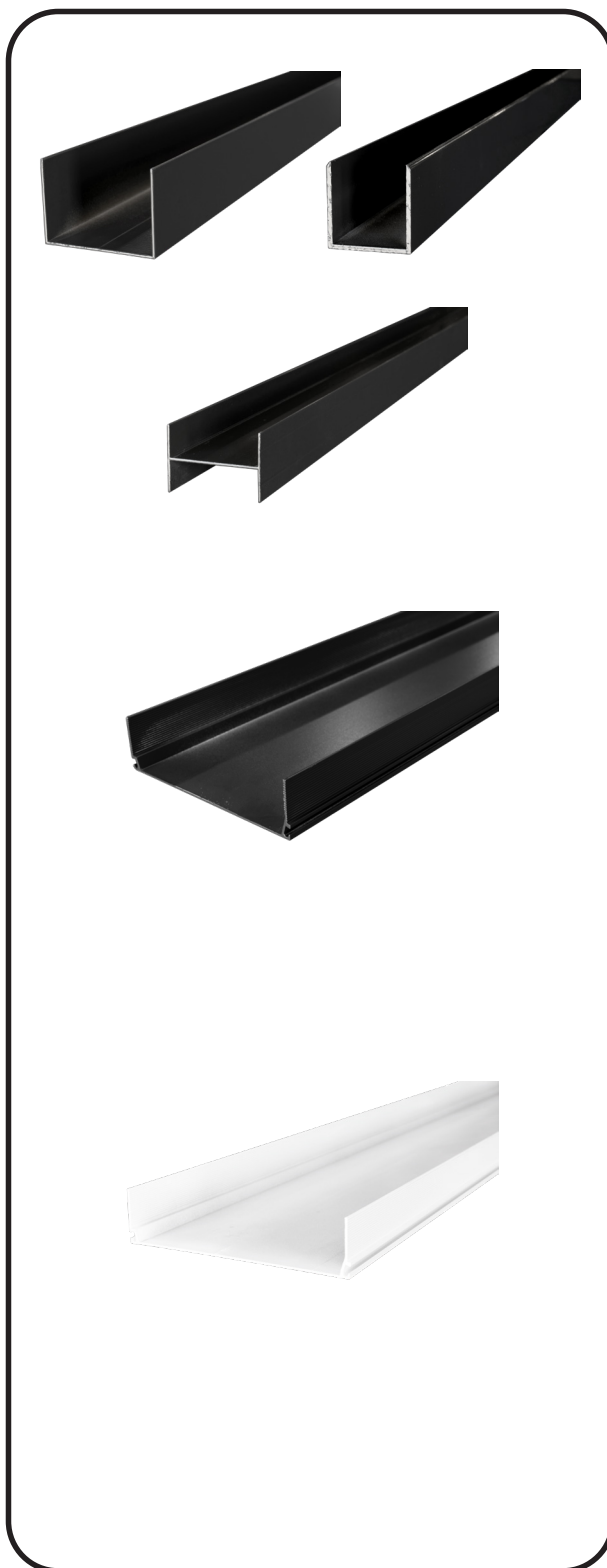
| | |
|--------|--|
| 600300 | 1x2-1/8x.045 Rec. Channel 24' White |
| 610300 | 1x2-1/8x.045 Rec. Channel 24' Bronze |
| 600305 | 1-1/2x2-1/8x.045 Rec. Channel 24' White |
| 610305 | 1-1/2x2-1/8x.045 Rec. Channel 24' Bronze |
| 600310 | 1-1/2x3-1/8x.045 Rec. Channel 24' White |
| 610310 | 1-1/2x3-1/8x.045 Rec. Channel 24' Bronze |
| 610315 | 2.312x2.375x.125 Channel 20' Bronze |

H Channel

| | |
|--------|--|
| 600318 | 2x.165x1.500x.050 H Channel 24' White |
| 610318 | 2x.165x1.500x.050 H Channel 24' Bronze |

SMB's

| | |
|--------|-------------------------|
| 600105 | 2x4x.046 SMB 18' White |
| 610105 | 2x4x.046 SMB 18' Bronze |
| 600104 | 2x4x.046 SMB 20' White |
| 610104 | 2x4x.046 SMB 20' Bronze |
| 600103 | 2x4x.046 SMB 22' White |
| 610103 | 2x4x.046 SMB 22' Bronze |
| 600102 | 2x4x.046 SMB 24' White |
| 610102 | 2x4x.046 SMB 24' Bronze |
| 600106 | 2x4x.046 SMB 26' White |
| 610106 | 2x4x.046 SMB 26' Bronze |
| 600100 | 2x4x.046 SMB 28' White |
| 610100 | 2x4x.046 SMB 28' Bronze |
| 600101 | 2x4x.046 SMB 30' White |
| 610101 | 2x4x.046 SMB 30' Bronze |
| 600126 | 2x5x.050 SMB 18' White |
| 610126 | 2x5x.050 SMB 18' Bronze |
| 600125 | 2x5x.050 SMB 20' White |
| 610125 | 2x5x.050 SMB 20' Bronze |
| 600124 | 2x5x.050 SMB 22' White |
| 610124 | 2x5x.050 SMB 22' Bronze |
| 600123 | 2x5x.050 SMB 24' White |
| 610123 | 2x5x.050 SMB 24' Bronze |
| 600127 | 2x5x.050 SMB 26' White |
| 610127 | 2x5x.050 SMB 26' Bronze |
| 600121 | 2x5x.050 SMB 28' White |
| 610121 | 2x5x.050 SMB 28' Bronze |
| 600120 | 2x5x.050 SMB 30' White |
| 610120 | 2x5x.050 SMB 30' Bronze |



Extrusion

SMB's continued

| | |
|--------|-------------------------|
| 600143 | 2x6x.050 SMB 18' White |
| 610143 | 2x6x.050 SMB 18' Bronze |
| 600142 | 2x6x.050 SMB 20' White |
| 610142 | 2x6x.050 SMB 20' Bronze |
| 600141 | 2x6x.050 SMB 22' White |
| 610141 | 2x6x.050 SMB 22' Bronze |
| 600140 | 2x6x.050 SMB 24' White |
| 610140 | 2x6x.050 SMB 24' Bronze |
| 600145 | 2x6x.050 SMB 26' White |
| 610145 | 2x6x.050 SMB 26' Bronze |
| 600146 | 2x6x.050 SMB 28' White |
| 610146 | 2x6x.050 SMB 28' Bronze |
| 600147 | 2x6x.050 SMB 30' White |
| 610147 | 2x6x.050 SMB 30' Bronze |

| | |
|--------|-------------------------|
| 600151 | 2x7x.055 SMB 18' White |
| 610151 | 2x7x.055 SMB 18' Bronze |
| 600152 | 2x7x.055 SMB 20' White |
| 610152 | 2x7x.055 SMB 20' Bronze |
| 600153 | 2x7x.055 SMB 22' White |
| 610153 | 2x7x.055 SMB 22' Bronze |
| 600154 | 2x7x.055 SMB 24' White |
| 610154 | 2x7x.055 SMB 24' Bronze |
| 600150 | 2x7x.055 SMB 26' White |
| 610150 | 2x7x.055 SMB 26' Bronze |
| 600155 | 2x7x.055 SMB 28' White |
| 610155 | 2x7x.055 SMB 28' Bronze |
| 600160 | 2x7x.055 SMB 30' White |
| 610160 | 2x7x.055 SMB 30' Bronze |
| 600161 | 2x7x.055 SMB 32' White |
| 610161 | 2x7x.055 SMB 32' Bronze |
| 600162 | 2x7x.055 SMB 34' White |
| 610162 | 2x7x.055 SMB 34' Bronze |
| 600163 | 2x7x.055 SMB 36' White |
| 610163 | 2x7x.055 SMB 36' Bronze |

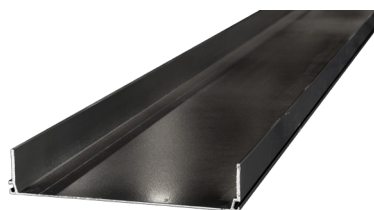


Extrusion

SMB's continued

| | |
|--------|-------------------------|
| 600171 | 2x8x.072 SMB 18' White |
| 610171 | 2x8x.072 SMB 18' Bronze |
| 600172 | 2x8x.072 SMB 20' White |
| 610172 | 2x8x.072 SMB 20' Bronze |
| 600169 | 2x8x.072 SMB 22' White |
| 610169 | 2x8x.072 SMB 22' Bronze |
| 600173 | 2x8x.072 SMB 24' White |
| 610173 | 2x8x.072 SMB 24' Bronze |
| 600170 | 2x8x.072 SMB 26' White |
| 610170 | 2x8x.072 SMB 26' Bronze |
| 600174 | 2x8x.072 SMB 28' White |
| 610174 | 2x8x.072 SMB 28' Bronze |
| 600176 | 2x8x.072 SMB 30' White |
| 610176 | 2x8x.072 SMB 30' Bronze |
| 600175 | 2x8x.072 SMB 32' White |
| 610175 | 2x8x.072 SMB 32' Bronze |
| 600178 | 2x8x.072 SMB 36' White |
| 610178 | 2x8x.072 SMB 36' Bronze |
| 600179 | 2x8x.072 SMB 40' White |
| 610179 | 2x8x.072 SMB 40' Bronze |

| | |
|--------|-------------------------|
| 600171 | 2x9x.072 SMB 18' White |
| 610171 | 2x9x.072 SMB 18' Bronze |
| 600181 | 2x9x.072 SMB 20' White |
| 610181 | 2x9x.072 SMB 20' Bronze |
| 600183 | 2x9x.072 SMB 24' White |
| 610183 | 2x9x.072 SMB 24' Bronze |
| 600180 | 2x9x.072 SMB 26' White |
| 610180 | 2x9x.072 SMB 26' Bronze |
| 600185 | 2x9x.072 SMB 28' White |
| 610185 | 2x9x.072 SMB 28' Bronze |
| 600184 | 2x9x.072 SMB 30' White |
| 610184 | 2x9x.072 SMB 30' Bronze |
| 600186 | 2x9x.072 SMB 32' White |
| 610186 | 2x9x.072 SMB 32' Bronze |
| 600187 | 2x9x.072 SMB 36' White |
| 610187 | 2x8x.072 SMB 36' Bronze |
| 600189 | 2x8x.072 SMB 40' White |
| 610189 | 2x8x.072 SMB 40' Bronze |



Extrusion

SMB's continued

| | |
|--------|--------------------------|
| 600164 | 2x10x.092 SMB 18' White |
| 610164 | 2x10x.092 SMB 18' Bronze |
| 600197 | 2x10x.092 SMB 20' White |
| 610197 | 2x10x.092 SMB 20' Bronze |
| 600196 | 2x10x.092 SMB 24' White |
| 610196 | 2x10x.092 SMB 24' Bronze |
| 610199 | 2x10x.092 SMB 26' Bronze |
| 600190 | 2x10x.092 SMB 28' White |
| 610190 | 2x10x.092 SMB 28' Bronze |
| 600198 | 2x10x.092 SMB 30' White |
| 610198 | 2x10x.092 SMB 30' Bronze |
| 600193 | 2x10x.092 SMB 32' White |
| 610193 | 2x10x.092 SMB 32' Bronze |
| 600192 | 2x10x.092 SMB 36' White |
| 610192 | 2x10x.092 SMB 36' Bronze |
| 610191 | 2x10x.092 SMB 36' Bronze |
| 600194 | 2x10x.092 SMB 40' White |
| 610194 | 2x10x.092 SMB 40' Bronze |



Super Gutter Accessories

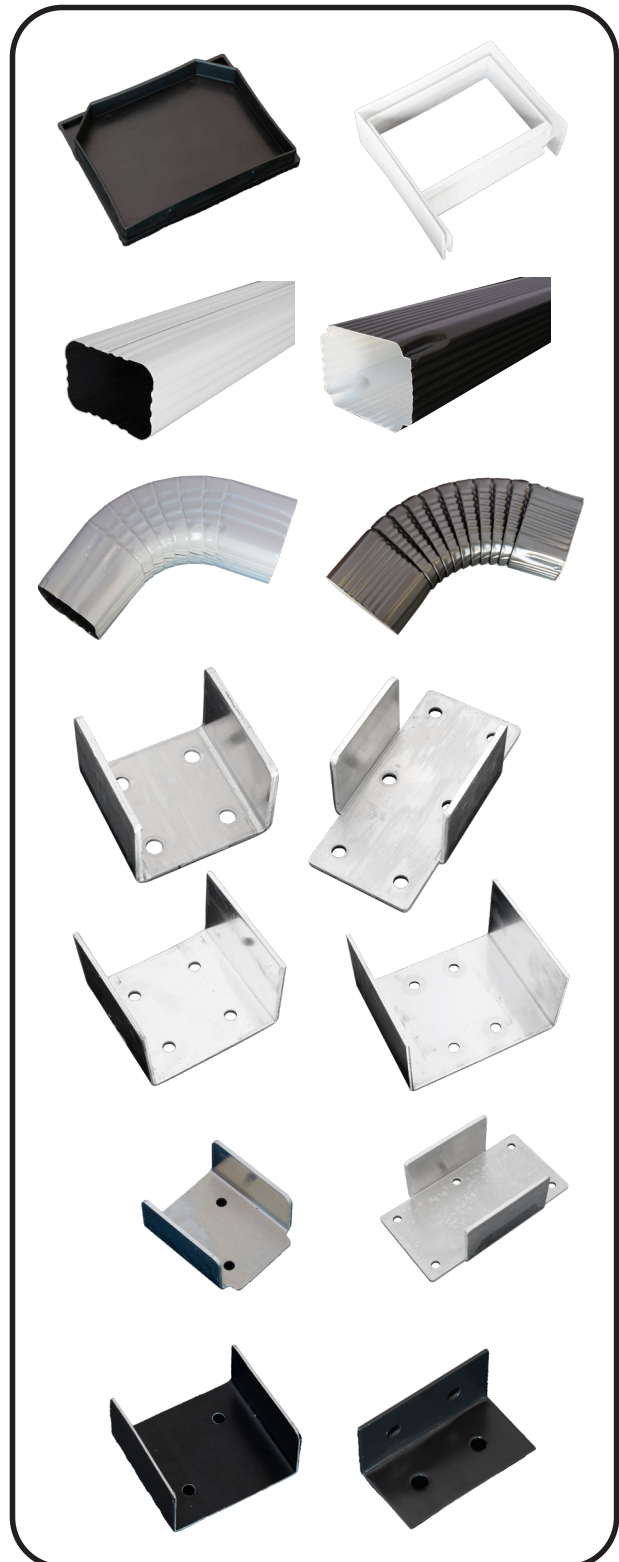
| | |
|--------|---------------------------------|
| 100270 | 4x5 Gutter End Cap White |
| 110270 | 4x5 Gutter End Cap Bronze |
| 100275 | 5x7 Super Gutter End Cap White |
| 110275 | 5x7 Super Gutter End Cap Bronze |
| 100280 | 4x5 Super Gutter Splice White |
| 110280 | 4x5 Super Gutter Splice Bronze |
| 100276 | 7" Gutter Bracket MF |

Super Gutter Accessories

| | |
|--------|-------------------------|
| 100700 | 3x4 Downpipe 8' White |
| 110700 | 3x4 Downpipe 8' Bronze |
| 100710 | 3x4 Downpipe 10' White |
| 110710 | 3x4 Downpipe 10' Bronze |
| 100720 | 3x4 Elbow A White |
| 110720 | 3x4 Elbow A Bronze |
| 100725 | 3x4 Elbow B White |
| 110725 | 3x4 Elbow B White |
| 100730 | 3x4 Drop Outlet MF |
| 100740 | Downpipe Bands White |
| 110740 | Downpipe Bands Bronze |
| 100715 | 4x5 Downpipe 10' White |
| 110715 | 4x5 Downpipe 10' Bronze |
| 100722 | 4x5 Elbow A White |
| 110722 | 4x5 Elbow A Bronze |
| 100727 | 4x5 Elbow B White |
| 110727 | 4x5 Elbow B White |
| 110730 | 4x5 Drop Outlet MF |

Clips

| | |
|--------|-----------------------------------|
| 100525 | 2x2x.125 3 Hole Angle Clip White |
| 110525 | 2x2x.125 3 Hole Angle Clip Bronze |
| 100610 | Castle Clips White |
| 110610 | Castle Clips Bronze |
| 100520 | 1x2 Capri Clips White |
| 110520 | 1x2 Capri Clips Bronze |
| 100521 | 1x3 Capri Clip White |
| 110521 | 1x3 Capri Clip Bronze |
| 110530 | Internal Clip |



Angles

95130 1x1x.062 Angle 20' White
95230 1x1x.062 Angle 20' Bronze

95131 1x2x.062 Angle 20' White
95231 1x2x.062 Angle 20' Bronze

95150 1x3x.062 Angle 20' White
95250 1x3x.062 Angle 20' Bronze

95155 2x2x.093 Angle 20' White
95255 2x2x.093 Angle 20' Bronze

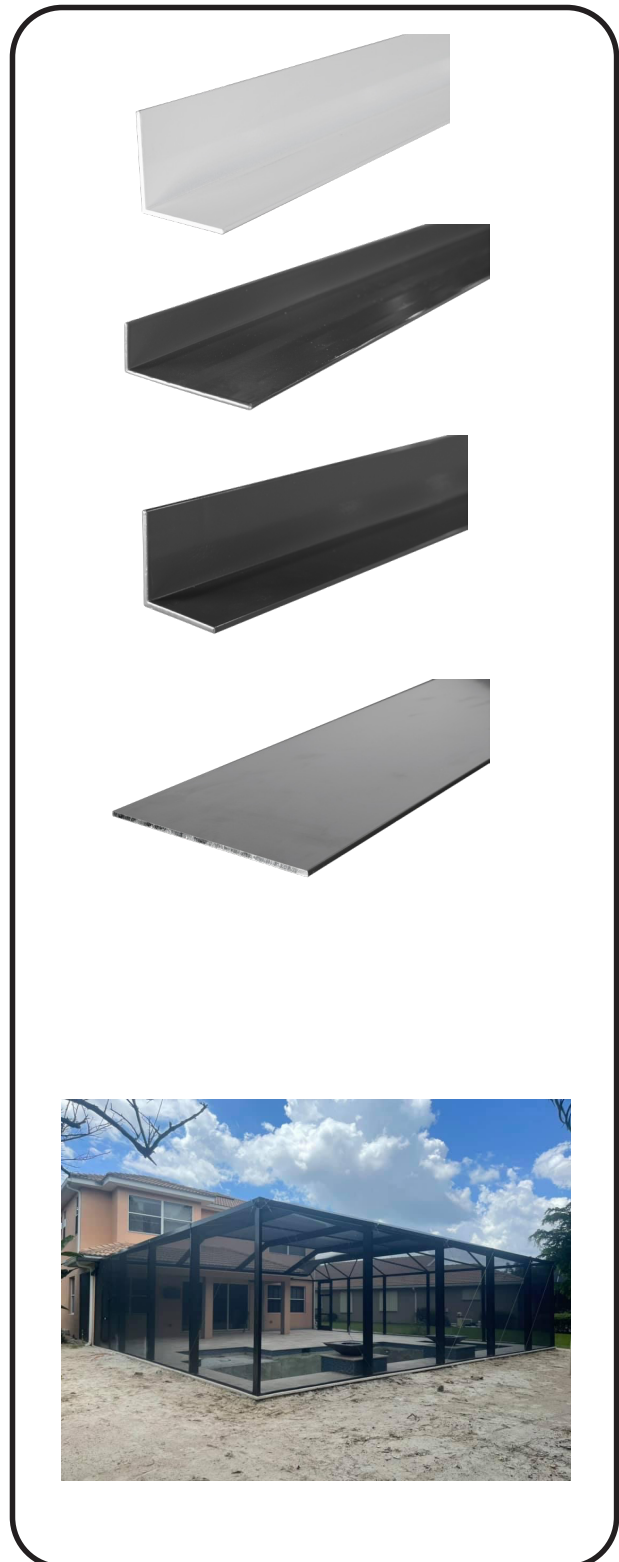
95134 2x2x.125 Angle 20' White
95234 2x2x.125 Angle 20' Bronze

Flat Bar

600550 1/8x4 Flat Bar 16' White
610550 1/8x4 Flat Bar 16' Bronze

600555 1/8x6 Flat Bar 16' White
610555 1/8x6 Flat Bar 16' Bronze

600545 1/8x2 Flat Bar 16' White
610545 1/8x2 Flat Bar 16' Bronze

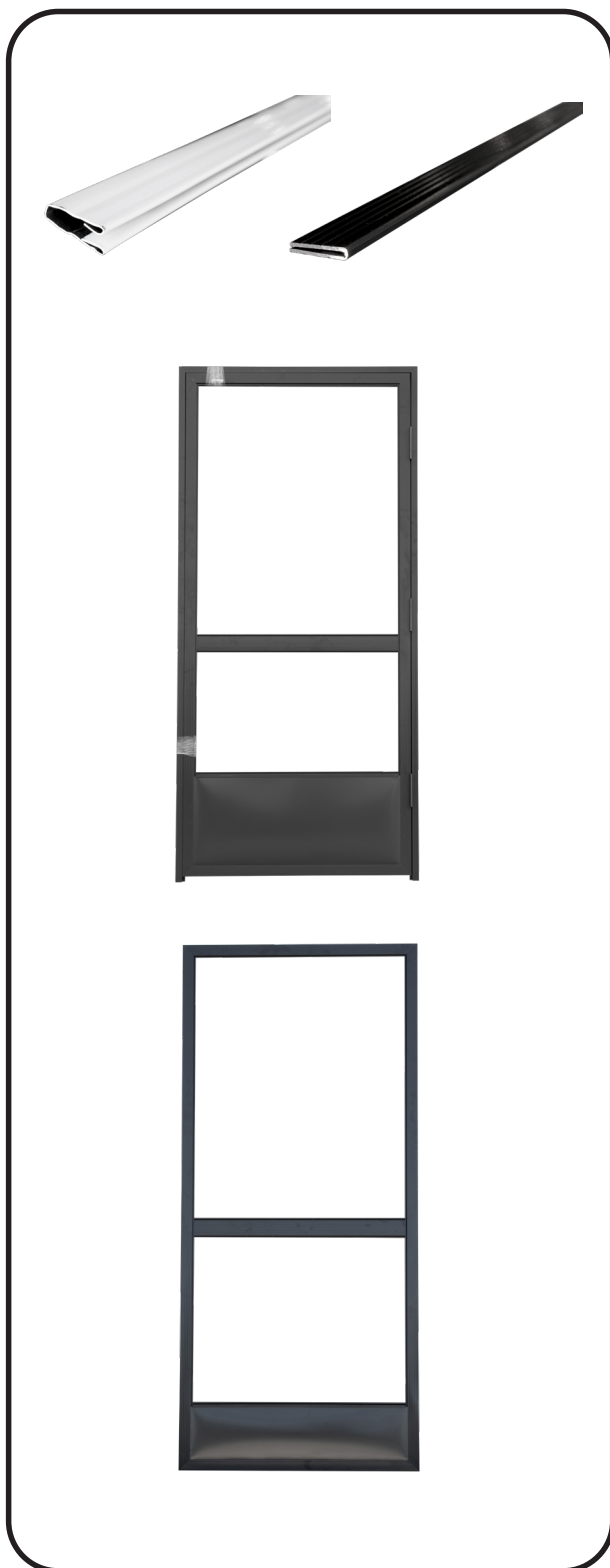


Kick Plate Trim

| | |
|--------|--------------------------------------|
| 100500 | Extruded Kick Plate Trim 12' White |
| 110500 | Extruded Kick Plate Trim 12' Bronze |
| 100501 | Roll Form Kick Plate Trim 12' White |
| 110501 | Roll Form Kick Plate Trim 12' Bronze |

Screen Door

| | |
|--------|---|
| 100400 | Screen Door Frame 8" KP White |
| 110400 | Screen Door Frame 8" KP Bronze |
| 100405 | Screen Door Frame 14" KP White |
| 110405 | Screen Door Frame 14" KP Bronze |
| 100410 | Screen Door Frame 24" KP White |
| 110410 | Screen Door Frame 24" KP Bronze |
| | |
| 100420 | Screen Door PHR 8" KP White Half Z |
| 110420 | Screen Door PHR 8" KP Bronze Half Z |
| 100421 | Screen Door PHR 8" KP White STD Z |
| 110421 | Screen Door PHR 8" KP Bronze STD Z |
| 100430 | Screen Door PHL 8" KP White Half Z |
| 110430 | Screen Door PHL 8" KP Bronze Half Z |
| 100430 | Screen Door PHL 8" KP White STD Z |
| 110430 | Screen Door PHL 8" KP Bronze STD Z |
| | |
| 100425 | Screen Door PHR 14" KP White Half Z |
| 110425 | Screen Door PHR 14" KP Bronze Half Z |
| 100426 | Screen Door PHR 14" KP White STD Z |
| 110426 | Screen Door PHR 14" KP Bronze STD Z |
| 100435 | Screen Door PHL 14" KP White Half Z |
| 110435 | Screen Door PHL 14" KP Bronze Half Z |
| 100436 | Screen Door PHL 14" KP White STD Z |
| 110436 | Screen Door PHL 14" KP Bronze STD Z |
| | |
| 108426 | Screen Door PHR 14" KP Wht Std Z w/ Felt Groove |
| 118426 | Screen Door PHR 14" KP BrzStd Z w/ Felt Groove |
| 108436 | Screen Door PHL 14" KP Wht Std Z w/ Felt Groove |
| 110843 | Screen Door PHR 14" KP Brz Std Z w/ Felt Groove |



Door Hardware

| | |
|--------|------------------------------|
| 100645 | Hardware Kit White w/SS Rod |
| 110645 | Hardware Kit Bronze w/SS Rod |
| 100620 | 36" Bugsweep White |
| 110620 | 36" Bugsweep Bronze |
| 100623 | 48" Bugsweep White |
| 110623 | 48" Bugsweep Bronze |
| 100630 | Hinges White |
| 110630 | Hinges Bronze |
| 100600 | Key Lock White |
| 110600 | Key Lock Bronze |
| 100615 | Inswing Latch Set White |
| 110615 | Inswing Latch Set Bronze |
| 100625 | Protector Door Chain Z/P |
| 100622 | 1" Threshold (10 Per Box) |

| | |
|--------|--|
| 100097 | Adjustable Z Bar 17' White |
| 110097 | Adjustable Z Bar 17' Bronze |
| 101000 | Adjustable Z Bar 17' White w/ Felt Groove |
| 111000 | Adjustable Z Bar 17' Bronze w/ Felt Groove |
| 100096 | Standard Z Bar 17' White |
| 110096 | Standard Z Bar 17' Bronze |
| 100093 | Standard Z Bar 17' White w/ Felt Groove |
| 110093 | Standard Z Bar 17' Bronzew/ Felt Groove |

| | |
|--------|-------------------------------|
| 610081 | 2x2x.044 Door Jamb 20' Bronze |
| 600095 | 2x2x.044 Door Jamb 24' White |
| 610095 | 2x2x.044 Door Jamb 24' Bronze |

| | |
|--------|---|
| 600086 | 2x2x.044 Door Jamb 20' White w/Felt Groove |
| 610086 | 2x2x.044 Door Jamb 20' Bronze w/Felt Groove |
| 600091 | 2x2x.044 Door Jamb 24' White w/Felt Groove |
| 610091 | 2x2x.044 Door Jamb 24' Bronze w/Felt Groove |



****CUSTOM PANEL ORDERS AVAILABLE****

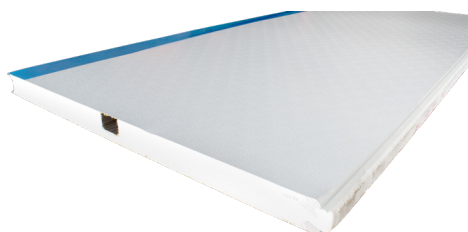
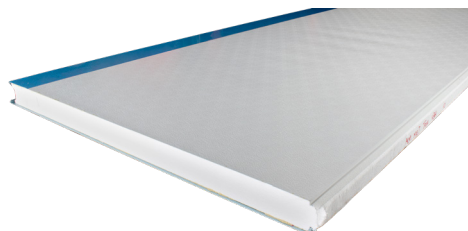
**THICKNESS, COLOR, FOAM DENSITY, LOCKING STYLE, FAN BEAM
CAN ALL BE CUSTOMIZED**

Elite Panels

| | |
|--------|--|
| 400408 | 3"x.024 Elite Panel 4'x8' |
| 400409 | 3"x.024 Elite Panel 4'x9' |
| 400410 | 3"x.024 Elite Panel 4'x10' |
| 400411 | 3"x.024 Elite Panel 4'x11' |
| 400412 | 3"x.024 Elite Panel 4'x12' |
| 400413 | 3"x.024 Elite Panel 4'x13' |
| 400414 | 3"x.024 Elite Panel 4'x14' |
| 400415 | 3"x.024 Elite Panel 4'x15' |
| 400416 | 3"x.024 Elite Panel 4'x16' |
| 400417 | 3"x.024 Elite Panel 4'x17' |
| 400418 | 3"x.024 Elite Panel 4'x18' |
| | |
| 410408 | 3"x.024 Elite Panel 4'x8' w/Fan Beam |
| 410409 | 3"x.024 Elite Panel 4'x9' w/Fan Beam |
| 410410 | 3"x.024 Elite Panel 4'x10' w/Fan Beam |
| 410411 | 3"x.024 Elite Panel 4'x11' w/Fan Beam |
| 410412 | 3"x.024 Elite Panel 4'x12' w/Fan Beam |
| 410413 | 3"x.024 Elite Panel 4'x13' w/Fan Beam |
| 410414 | 3"x.024 Elite Panel 4'x14' w/Fan Beam |
| 410415 | 3"x.024 Elite Panel 4'x15' w/Fan Beam |
| 410416 | 3"x.024 Elite Panel 4'x16' w/Center Fan Beam |
| 410417 | 3"x.024 Elite Panel 4'x17' w/Center Fan Beam |
| 410418 | 3"x.024 Elite Panel 4'x18' w/Center Fan Beam |
| | |
| 402208 | 3"x.024 Elite Panel 2'x8' |
| 402209 | 3"x.024 Elite Panel 2'x9' |
| 402210 | 3"x.024 Elite Panel 2'x10' |
| 402211 | 3"x.024 Elite Panel 2'x11' |
| 402212 | 3"x.024 Elite Panel 2'x12' |
| 402213 | 3"x.024 Elite Panel 2'x13' |
| 402214 | 3"x.024 Elite Panel 2'x14' |
| 402215 | 3"x.024 Elite Panel 2'x15' |
| 402216 | 3"x.024 Elite Panel 2'x16' |
| 402217 | 3"x.024 Elite Panel 2'x17' |
| 402218 | 3"x.024 Elite Panel 2'x18' |

Elite Accessories

| | |
|--------|-------------------------------------|
| 130470 | 3" White Peel & Seal 33.5' 45 Mills |
| 130455 | 4" Peel & Seal Powerbond 50' White |
| 130460 | 6" Peel & Seal Powerbond 50' White |
| | |
| 400082 | 3" Drip Edge Fascia 25' White |
| 400083 | 3" Drip Edge Fascia 25' Bronze |
| 400060 | 4" Header 24' White |
| 410060 | 4" Header 24' Bronze |
| 400053 | 4" Receiving Channel 24' White |
| 400200 | 4" E Fascia White 25' |
| 410082 | 4" E Fascia Bronze 25' |
| 400098 | 4" E Gutter White 24' |
| 410080 | 4" E Gutter Bronze 24' |



PHIFER®

Phifer Screen

| | |
|--------|--|
| 125036 | 36" Charcoal 18x14 Phifer Screen |
| 125042 | 42" Charcoal 18x14 Phifer Screen |
| 125048 | 48" Charcoal 18x14 Phifer Screen |
| 125060 | 60" Charcoal 18x14 Phifer Screen |
| 125066 | 66" Charcoal 18x14 Phifer Screen |
| 125072 | 72" Charcoal 18x14 Phifer Screen |
| 125078 | 78" Charcoal 18x14 Phifer Screen |
| 125084 | 84" Charcoal 18x14 Phifer Screen |
| 125090 | 90" Charcoal 18x14 Phifer Screen |
| 125096 | 96" Charcoal 18x14 Phifer Screen |
| 125102 | 102" Charcoal 18x14 Phifer Screen |
| 125108 | 108" Charcoal 18x14 Phifer Screen |
| 125132 | 132" Charcoal 18x14 Phifer Screen |
| 125436 | 36" Charcoal 20x20 Phifer Screen |
| 125448 | 48" Charcoal 20x20 Phifer Screen |
| 125460 | 60" Charcoal 20x20 Phifer Screen |
| 125478 | 78" Charcoal 20x20 Phifer Screen |
| 125484 | 84" Charcoal 20x20 Phifer Screen |
| 125496 | 96" Charcoal 20x20 Phifer Screen |
| 125498 | 108" Charcoal 20x20 Phifer Screen |
| 125432 | 132" Charcoal 20x20 Phifer Screen |
| 125336 | 36" Charcoal Florida Glass Phifer |
| 125372 | 72" Charcoal Florida Glass Phifer |
| 127036 | 36" Charcoal Pet Screen Phifer |
| 127048 | 48" Charcoal Pet Screen Phifer |
| 125784 | 84" Tuff Screen Phifer |
| 125696 | 96" Tuff Screen Phifer |
| 127108 | 108" Tuff Screen Phifer |
| 126120 | 120" Tuff Screen Phifer |
| 127132 | 132" Tuff Screen Phifer |
| 126220 | 120" Tuff Screen No See-Um Phifer |
| 128132 | 132" Tuff Screen No See-Um Phifer |
| 120150 | Round Black Spline .220 1,000' Roll |
| 120155 | Flat Black Pet Spline .285 1,000' Roll |
| 120157 | Flat Black Spline .310 1,000' Roll |
| 120160 | Flat Black Spline .315 1,000' Roll |
| 120164 | Flat Black Spline .315 + 1,000' Roll |
| 120168 | Double Spline Roller |

18x14 Pool & Patio Screen

BY PHIFER



20x20 No-See-Um Screen

BY PHIFER



TuffScreen®

BY PHIFER





Casting

| | |
|--------|--------------------------------|
| 100360 | 3" Insert w/ 2" Leg MF |
| 100365 | 3" Insert w/ 2" Leg MF w/ Ears |
| 100370 | 4" Post Casting MF |
| 100372 | 4" Post Casting MF w/ Ears |
| 100375 | 4" Insert Spline Groove MF |
| 100380 | 6" Insert Spline Groove MF |

Cable Ties

| | |
|--------|----------------------|
| 100650 | 12' Cable Tie White |
| 110650 | 12' Cable Tie Bronze |
| 100652 | 14' Cable Tie White |
| 110652 | 14' Cable Tie Bronze |
| 100655 | 16' Cable Tie White |
| 110655 | 16' Cable Tie Bronze |
| 110651 | 18' Cable Tie Bronze |

****Custom Size Cables 1-2 Day Lead Time****

Caulk/Sealants

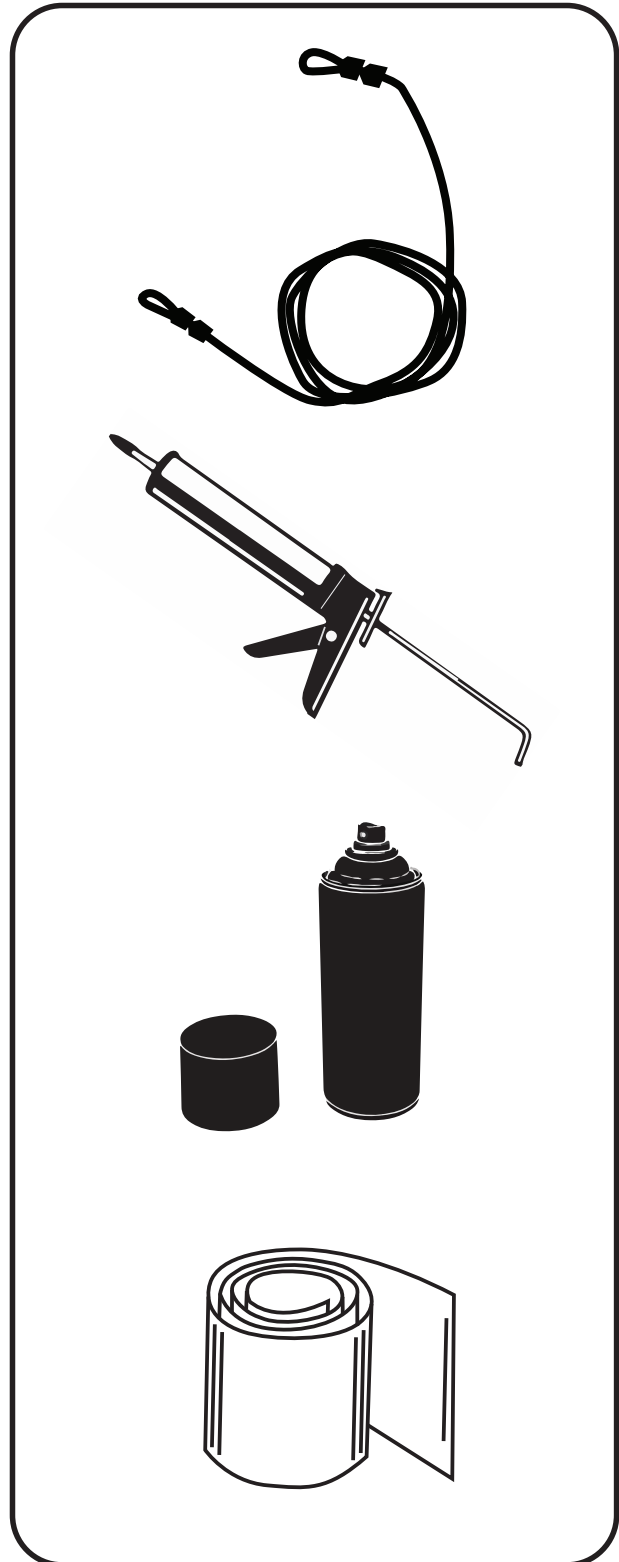
| | |
|--------|---|
| 141000 | OSI SBR-100 White |
| 141001 | OSI SBR-100 Bronze |
| 142700 | OSI HM-270 Silicone White |
| 142702 | OSI HM-270 Silicone Clear |
| 141010 | OSI Quad Max White |
| 142300 | Geocel 2300 White |
| 142301 | Geocel 2300 Bronze |
| 142302 | Geocel 2300 Clear |
| 141900 | Solar Seal White |
| 141901 | Solar Seal Bronze |
| 141902 | Solar Seal Clear |
| 143000 | Degae Seal 2000 White |
| 142315 | GACO GacoPatch Silicone Roof Patch 2 Gallon White |

Touch Up Paint

| | |
|--------|-----------------------|
| 100735 | Touch Up Paint White |
| 110735 | Touch Up Paint Bronze |

Roll Form

| | |
|--------|--------------------------------|
| 300710 | .024 White/Smooth Pans |
| 300720 | .032 White/Smooth Pans |
| 300730 | Gutter White/Smooth |
| 310730 | Gutter Bronze/Smooth |
| 300735 | Gutter White/Wood Grain |
| 310735 | Gutter Bronze/Wood Grain |
| 320735 | Gutter Ivory/White Wood Grain |
| 300740 | Valance White/Smooth |
| 310740 | Valance Bronze/Smooth |
| 300745 | Valance White/Wood Grain |
| 310745 | Valance Bronze/Wood Grain |
| 320745 | Valance Ivory/White Wood Grain |



Hardware

| | | | |
|--------|---------------------|--------|-------------------|
| 200000 | 8x1/2 SMS 10M WHT | 200080 | 10x2 SMS 3M WHT |
| 200005 | 8x1/2 SMS 1M WHT | 200085 | 10x2 SMS 1M WHT |
| 210000 | 8x1/2 SMS 10M BRZ | 210080 | 10x2 SMS 3M BRZ |
| 210005 | 8x1/2 SMS 1M BRZ | 210085 | 10x2 SMS 1M BRZ |
| 200010 | 8x3/4 SMS 10M WHT | 200090 | 10x3 SMS 1.5M WHT |
| 200015 | 8x3/4 SMS 1M WHT | 200095 | 10x3 SMS 1C WHT |
| 210010 | 8x3/4 SMS 10M BRZ | 210090 | 10x3 SMS 1.5M BRZ |
| 210015 | 8x3/4 SMS 1M BRZ | 210095 | 10x3 SMS 1C BRZ |
| 200020 | 8x1 SMS 10M WHT | 200100 | 10x4 SMS 1M WHT |
| 200025 | 8x1 SMS 1M WHT | 200105 | 10x4 SMS 1C WHT |
| 210020 | 8x1 SMS 10M BRZ | 210100 | 10x4 SMS 1M BRZ |
| 210025 | 8x1 SMS 1M BRZ | 210105 | 10x4 SMS 1C BRZ |
| 200030 | 8x1-1/4 SMS 5M WHT | | |
| 200035 | 8x1-1/4 SMS 1M WHT | | |
| 210030 | 8x1-1/4 SMS 5M BRZ | | |
| 210035 | 8x1-1/4 SMS 1M BRZ | | |
| 200040 | 10x1/2 SMS 10M WHT | | |
| 200045 | 10x1/2 SMS 1M WHT | | |
| 210040 | 10x1/2 SMS 10M BRZ | | |
| 210045 | 10x1/2 SMS 1M BRZ | | |
| 200050 | 10x3/4 SMS 8M WHT | | |
| 200035 | 10x3/4 SMS 1M WHT | | |
| 210050 | 10x3/4 SMS 8M BRZ | | |
| 210055 | 10x3/4 SMS 1M BRZ | | |
| 200060 | 10x1 SMS 6M WHT | | |
| 200065 | 10x1 SMS 1M WHT | | |
| 210060 | 10x1 SMS 6M BRZ | | |
| 210065 | 10x1 SMS 1M BRZ | | |
| 200070 | 10x1-1/2 SMS 5M WHT | | |
| 200075 | 10x1-1/2 SMS 1M WHT | | |
| 210070 | 10x1-1/2 SMS 5M BRZ | | |
| 210075 | 10x1-1/2 SMS 1M BRZ | | |



Self Drill Fasteners

| | | | |
|--------|---------------------------|--------|--------------------------------------|
| 202010 | 8x9/16 SDS 10M WHT | 203000 | 1/4x1-1/2 Millfast Concrete 2M WHT |
| 202015 | 8x9/16 SDS 1M WHT | 203005 | 1/4x1-1/2 Millfast Concrete 1C WHT |
| 212010 | 8x9/16 SDS 10M BRZ | 213000 | 1/4x1-1/2 Millfast Concrete 2M BRZ |
| 212015 | 8x9/16 SDS 1M BRZ | 213005 | 1/4x1-1/2 Millfast Concrete 1C BRZ |
| | | | |
| 202020 | 8x3/4 SDS 10M WHT | 203010 | 1/4x1-3/4 Millfast Concrete 2M WHT |
| 202025 | 8x3/4 SDS 1M WHT | 203015 | 1/4x1-3/4 Millfast Concrete 1C WHT |
| 212020 | 8x3/4 SDS 10M BRZ | 213010 | 1/4x1-3/4 Millfast Concrete 2M BRZ |
| 212025 | 8x3/4 SDS 1M BRZ | 213015 | 1/4x1-3/4 Millfast Concrete 1C BRZ |
| | | | |
| 202030 | 10x3/4(5/16) SDS 7.5M WHT | 203020 | 1/4x2-1/4 Millfast Concrete 1.5M WHT |
| 202035 | 10x3/4(5/16) SDS 1M WHT | 203025 | 1/4x2-1/4 Millfast Concrete 1C WHT |
| 212030 | 10x3/4(5/16) SDS 7.5M BRZ | 213020 | 1/4x2-1/4 Millfast Concrete 1.5M BRZ |
| 212035 | 10x3/4(5/16) SDS 1M BRZ | 213025 | 1/4x2-1/4 Millfast Concrete 1C BRZ |
| | | | |
| 202040 | 10x3/4(1/4) SDS 6.5M WHT | 203030 | 1/4x3 Millfast Concrete 1.5M WHT |
| 202045 | 10x3/4(1/4) SDS 1M WHT | 203035 | 1/4x3 Millfast Concrete 1C WHT |
| 212040 | 10x3/4(1/4) SDS 6.5M BRZ | 213030 | 1/4x3 Millfast Concrete 1.5M BRZ |
| 212045 | 10x3/4(1/4) SDS 1M BRZ | 213035 | 1/4x3 Millfast Concrete 1C BRZ |
| | | | |
| 202050 | 10x1 SDS 5M WHT | 203040 | 1/4x4 Millfast Concrete 1M WHT |
| 202055 | 10x1 SDS 1M WHT | 203045 | 1/4x4 Millfast Concrete 1C WHT |
| 212050 | 10x1 SDS 10M BRZ | 213040 | 1/4x4 Millfast Concrete 1M BRZ |
| 212055 | 10x1 SDS 1M BRZ | 213045 | 1/4x4 Millfast Concrete 1C BRZ |
| | | | |
| 202060 | 10x1-1/2 SDS 5M WHT | 203050 | 1/4x5 Millfast Concrete .075M WHT |
| 202065 | 10x1-1/2 SDS 1M WHT | 203055 | 1/4x5 Millfast Concrete 1C WHT |
| 212060 | 10x1-1/2 SDS 10M BRZ | 213050 | 1/4x5 Millfast Concrete .075M BRZ |
| 212065 | 10x1-1/2 SDS 1M BRZ | 213055 | 1/4x5 Millfast Concrete 1C BRZ |
| | | | |
| 202070 | 10x2 SDS 2M WHT | 203060 | 1/4x6 Millfast Concrete .5M WHT |
| 202075 | 10x2 SDS 1M WHT | 203065 | 1/4x6 Millfast Concrete 1C WHT |
| 212070 | 10x2 SDS 2M BRZ | 213060 | 1/4x6 Millfast Concrete .5M BRZ |
| 212075 | 10x2 SDS 1M BRZ | 213065 | 1/4x5 Millfast Concrete 1C WHT |
| | | | |
| | | 204000 | 1/4x2-1/4 STEEL T-BOLT 1C WHT |
| | | 214000 | 1/4x2-1/4 STEEL T-BOLT 1C BRZ |

Self Drill Fasteners

| | |
|--------|------------------------------|
| 200165 | 8x3/4 ZINC SDS w/NEO WASH 1M |
| 203070 | 3/8x4 POWER WEDGE BOLT WHT |
| 213070 | 3/8x4 POWER WEDGE BOLT BRZ |
| 214010 | 1-1/2" ALUMINUM BOND WASHER |
| 300100 | 1/4"x4" ZINC LAG SCREW |
| | |
| 202080 | 12x3/4(1/4) SDS 5M WHT |
| 202085 | 12x3/4(1/4) SDS 1M WHT |
| 212080 | 12x3/4(1/4) SDS 5M BRZ |
| 212085 | 12x3/4(1/4) SDS 1M BRZ |
| | |
| 202090 | 12x3/4(5/16) SDS 5M WHT |
| 202095 | 12x3/4(5/16) SDS 1M WHT |
| 212090 | 12x3/4(5/16) SDS 5M BRZ |
| 212095 | 12x3/4(5/16) SDS 1M BRZ |
| | |
| 202100 | 12x1 SDS 5M WHT |
| 202105 | 12x1 SDS 1M WHT |
| 212100 | 12x1 SDS 5M BRZ |
| 212105 | 12x1 SDS 1M BRZ |



HR-1 TOP CAP

(mates with HR-2; bundle of 10)

| | |
|----------------|-----|
| 94145 - White | 20' |
| 94245 - Bronze | 20' |
| 94345 - Black | 20' |

HR-2 SNAP PLATE

(mates with HR-1, 3, 4, 4A, 4C, 6, 7, 8, 14)

| | |
|----------------|-------|
| 94100 - White | 19'6" |
| 94110 - White | 21'1" |
| 94111 - White | 23' |
| 94200 - Bronze | 19'6" |
| 94210 - Bronze | 21'1" |
| 94211 - Bronze | 23' |
| 94300 - Black | 19'6" |
| 94310 - Black | 21'1" |
| 94311 - Black | 23' |

HR-4A SNAP POST

(mates with HR-1, 3, 4, 4A, 4C, 6, 7, 8, 14)

| | |
|----------------|-------|
| 94135 - White | 21'1" |
| 94235 - Bronze | 21'1" |
| 94335 - Black | 21'1" |

HR-3 BOTTOM CHANNEL

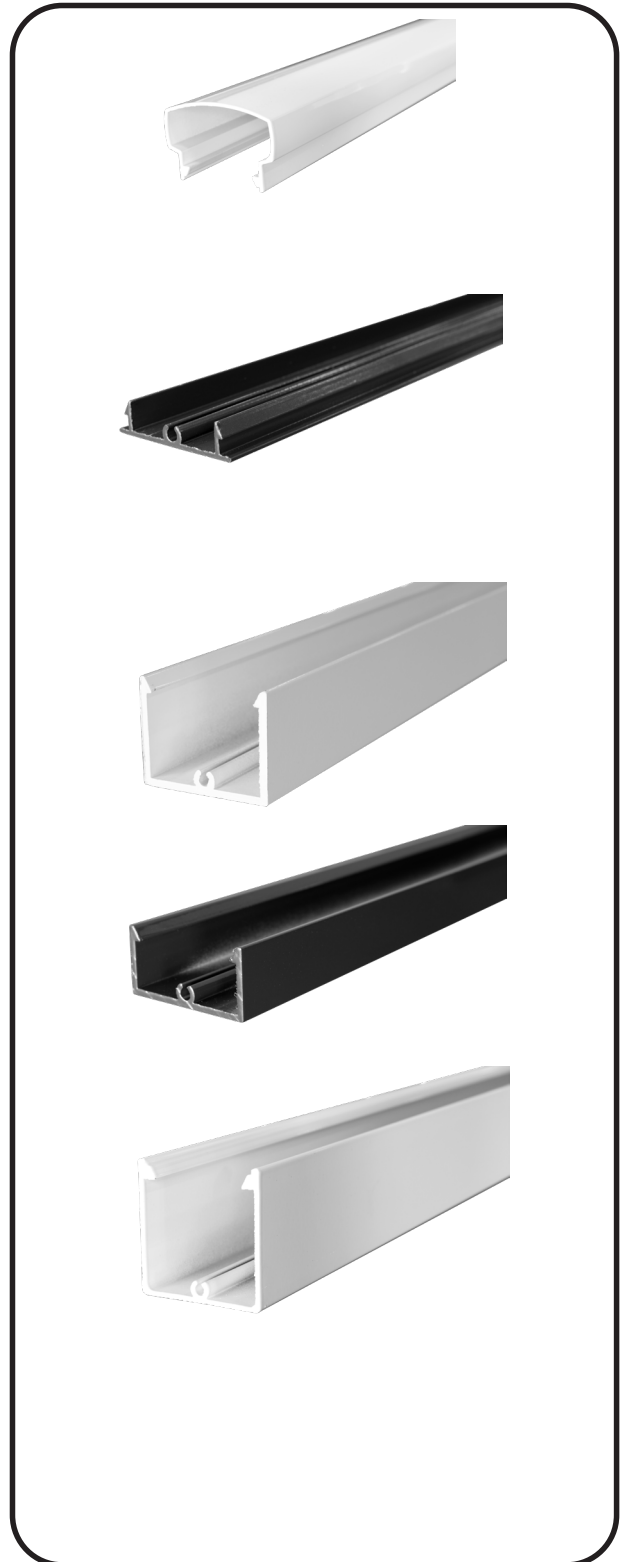
(mates with HR-2)

| | |
|----------------|-------|
| 94165 - White | 19'6" |
| 94265 - Bronze | 19'6" |
| 94365 - Black | 19'6" |

HR-4 SNAP POST

(mates with HR-2)

| | |
|----------------|-------|
| 94120 - White | 19'6" |
| 94130 - White | 21'1" |
| 94131 - White | 23' |
| 94220 - Bronze | 19'6" |
| 94230 - Bronze | 21'1" |
| 94231 - Bronze | 23' |
| 94320 - Black | 19'6" |
| 94330 - Black | 21'1" |
| 94331 - Black | 23' |



HR-5 1" PICKET

| | |
|----------------|--------|
| 94176 - White | 39" |
| 94174 - White | 19'10" |
| 94175 - White | 23' |
| 94276 - Bronze | 39" |
| 94274 - Bronze | 19'10" |
| 94275 - Bronze | 23' |
| 94375 - Black | 23' |

HR-10 TOP CAP

(mates with HR-11A)

| | |
|----------------|-----|
| 94140 - White | 20' |
| 94240 - Bronze | 20' |
| 94340 - Black | 20' |

HR-11A SNAP PLATE

| | |
|----------------|-----|
| 94150 - White | 20' |
| 94250 - Bronze | 20' |
| 94350 - Black | 20' |

HR-12 SNAP CHANNEL

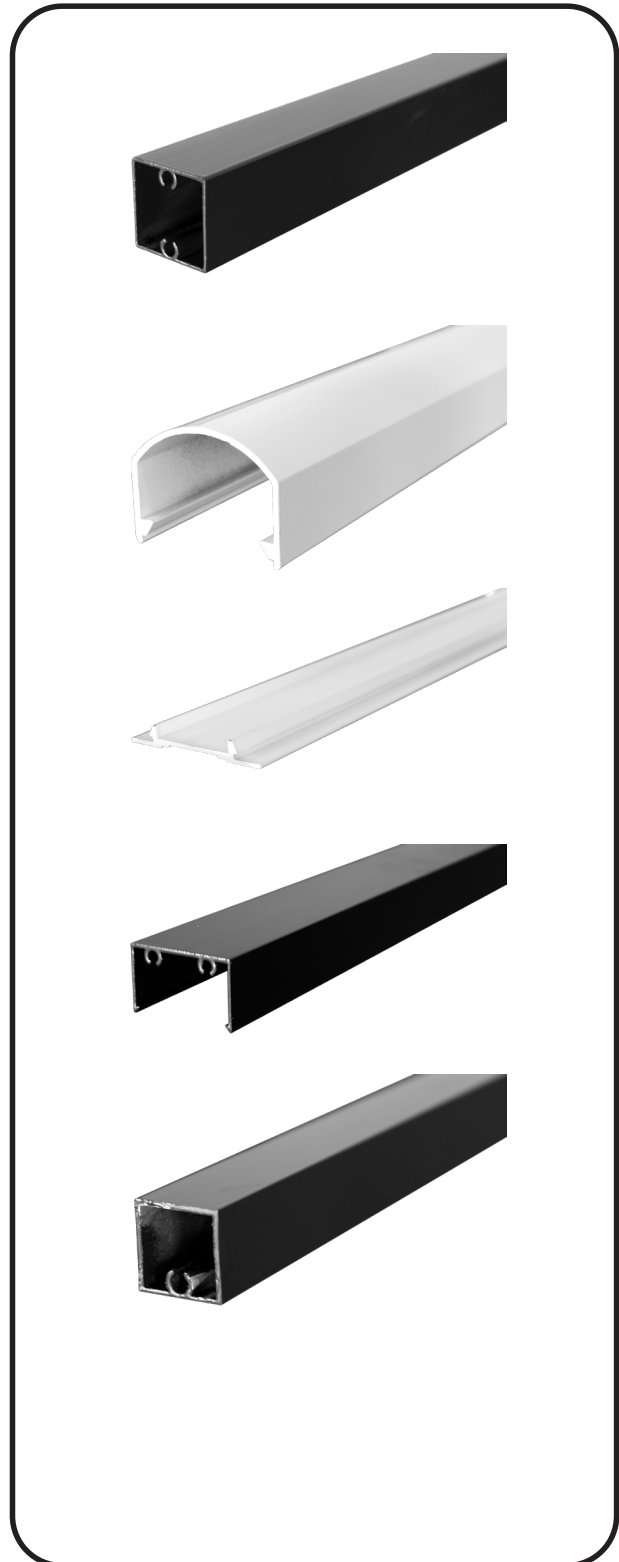
| | |
|----------------|-------|
| 94160 - White | 19'6" |
| 94260 - Bronze | 19'6" |
| 94360 - Black | 19'6" |

HR-13 3/4" PICKET

| | |
|----------------|-------|
| 94170 - White | 19'1" |
| 94270 - Bronze | 19'1" |
| 94370 - Black | 19'1" |

HR-14 TOP CAP

| | |
|----------------|-----|
| 94173 - White | 20' |
| 94273 - Bronze | 20' |
| 94373 - Black | 20' |



TERMS AND CONDITIONS OF SALE

Entire Agreement

The terms set forth herein constitute the sole terms and conditions of the contract between you and us. No other terms, conditions, or understanding, whether oral or written shall be binding upon us, unless hereafter made in writing and signed by our authorized representative. This Agreement expressly limits acceptance to these terms; no order shall have any force or effect until acknowledged in writing by us; any proposal for additional or different terms is hereby deemed material and is objected to and rejected. No terms of any document or form submitted by you shall be effective to alter or add to the terms and conditions of this Agreement. Unless otherwise stated herein, your receipt of any portion of the goods shall constitute acceptance of all terms and conditions of this Agreement unless you immediately reject and return all such goods.

Quotations and Orders

All quotations made by us are subject to prior sale of the goods, unless otherwise expressly agreed in writing. All orders are subject to approval of credit.

Prices

The prices quoted may be changed by us without notice in order to reflect our prices at time of shipment and any increase in transportation, labor or other costs. We reserve the right to correct any obvious errors in specifications or prices. The price for the Goods and all other amounts owed to us shall be paid by you without abatement, deduction or set off.

Taxes

Any taxes which, under any existing or future law, we may be required to pay or collect with respect to the sale, purchase, delivery, storage, processing, use, consumption or transportation of any of the goods or services covered shall, if not separately shown, be added as a separate item to the quoted price and shall be paid by you to us on demand. The foregoing shall not apply to any taxes, the payment or collection of which by us is excused by reason of delivery to us of valid tax exemption certificates.

Quantities

On certain commodities the producing mill reserves the privilege of shipping over or under the ordered quantity in accordance with established trade practices which will constitute full and complete shipment of the material specified.

Terms of Payment

Full and final payment shall be due thirty (30) days from the date of each invoice unless otherwise expressly agreed in writing. Cash discount terms for early payment vary on a product-line basis. Any invoice not paid in 30 days will accrue a late payment charge of 1 1/2% per month. In the event this account is not paid according to the terms set forth in the invoice or statement, customer agrees to pay a service charge on all delinquent amounts more than 10 days past due. This charge will be computed by applying a periodic rate of not to exceed a maximum legal rate or 1 1/2% per month (18% per annum) to the previous month's unpaid balance. This service

charge is to cover the re-billing costs and is not a method of financing the account. If the account becomes more than 50 days delinquent and is placed in the hands of a collection agent, Customer will pay reasonable attorney's fees.

Deliveries

Any delivery schedule indicated is based on our present estimate of the time required to ship after receipt of your order and in case of any item which is to be shipped from a producing mill upon current production schedules of the producing mill. In the event of any delay in our performance due in whole or in part to any cause beyond our reasonable control, we shall have such additional time for our performance as may be reasonably necessary under the circumstances. Acceptance by you of any goods shall constitute a waiver by you of any claim for damages on account of any delay in the delivery of such goods.

Suspension of Performance

If in our judgment reasonable doubt exists as to your financial responsibility, or if you are past due in payment of any amount owing to us, we reserve the right, without liability and without prejudice to any other remedies, to suspend performance, decline to ship, or stop any material in transit, until we received payment of all amounts, whether or but due, owing to us, or adequate assurance of such payment.

Shipments

Unless otherwise expressly stated, shipment may be by carrier or other means selected by us. Title to any goods priced at shipping point shall pass to you upon delivery at such shipping point; title to any goods priced at destination shall pass to you upon delivery at the destination specified.

Warranties

We expressly warrant that the goods will conform to the descriptions and specifications incorporated herein within the tolerances and variances established herein, and that the goods will be free from defects in material and workmanship.

DISCLAIMER OF WARRANTIES: WE MAKE NO OTHER EXPRESS OR IMPLIED WARRANTIES WHATSOEVER WITH RESPECT TO ANY GOODS INCLUDING BUT NOT LIMITED TO THE IMPLIED WARRANTIES OF MERCHANTABILITY OR FITNESS FOR ANY PARTICULAR PURPOSE.

Tolerance and Variations

All goods shall be subject to tolerances and variations consistent with usual trade practices and applicable specifications regarding dimensions, straightness, section, composition and mechanical properties and normal variations in surface and internal conditions and quality and shall also be subject to deviations from tolerances and variations consistent with practical testing and inspection methods.



**AMERICAN METALS
SUPPLY, LLC.**

TERMS AND CONDITIONS OF SALE

Claims and Return Policy

Purchaser shall upon receipt of materials, immediately check for shortages, damages or improper material and report to American Metals within five days. Failure to notify shall relieve American Metals of any claims for those conditions.

Material may not be returned without written authorization. Returns can only be accepted for standard materials that we stock. Returned material shall be subject to company inspection. Credit for salable materials shall be allowed at the invoiced prices, less 15% minimum handling charge.

American Metals can only accept returns for standard merchandise that we stock. Special orders are not returnable.

In the event that the material provided is not suitable for the particular application, our sole liability is limited to the replacement of such material. The seller shall not in any event be liable for the cost of any labor, expended or any such material or for any special, direct, indirect incidental or consequential damages.

Limitations of Liability

Your exclusive remedy for breach of contract as to any goods, and our only liability for any such breach, shall be replacement or repair of such goods, or repayment to you of the purchase price paid by you for such goods, whichever such remedy we select, and if we elect to repay the purchase price of any such goods and so advise you, you must return such good to us immediately. In no event will we be liable for incidental or consequential damages incurred by you or by third parties.

Tools, Dies and Fixtures

Unless otherwise expressly provided, any tools, dies or fixtures which may be developed for use in the production of the goods covered shall be owned by us or any producing mill, as we may elect, even though you are charged in whole or part for the cost of such tools, dies and fixtures.

Indemnification

If any of the goods are to be furnished to your specifications, you agree to indemnify us and our successor and assigns, against all liabilities and expenses resulting from any claim of infringement of any patent in connection with the production of such goods. You also agree to defend and indemnify us against all claims and expenses arising out of the mishandling, abuse or misuse of the goods by you or your customer.

Compliance With Law

Any clause required to be included in a contract by any applicable law, or by administrative regulations having the effect of law, is hereby incorporated herein.

Cancellation

A contract may be canceled or modified only by written agreement between us, except as otherwise provided. Your assistance upon canceling or suspending fabrication or

shipment, or your failure to furnish specifications when required, may be treated by us as a breach of contract by you, and we may cancel any unshipped balance without prejudice to any other remedies we may have.

Set-Off

You authorize us to apply toward payment of any moneys that become due us hereunder any sums which may now or hereafter be owed to you by us, or by any subsidiary or affiliated company of ours.

Fabrication

We do not warrant or accept responsibility for goods which you fabricate from material supplied by us.

Assignability-Continuity

You shall not assign this contract or any right or obligation under this contract without our express written consent and any purported assignment shall be void and ineffective, but the contract shall be binding upon and inure to the benefit of you and our successors.

Force Majeure

We shall not be liable for delay or failure to perform in whole or part by reason of contingencies beyond our control, whether herein specifically enumerated or not, including among others, act of God, force majeure, war, acts of war, revolution, civil commotions, riot, acts of public enemies, blockade of embargo, delays of carriers, car dispute, casualty or accident, earthquake, epidemic, flood, cyclone, tornado, hurricane, or other windstorm, lack or failure of sources of supply of labor, raw materials, power or supplies, or excessive cost thereof, contingencies interfering with the production or with customary or usual means of transportation of the goods, or with the supply of coal or fuel or of any raw material of which said goods are a product or which may be used in their manufacture, delays of vendors, or, where material covered hereby is not manufactured by us, then lack or failure of sources of supply of said materials, or by reason of any law, order, proclamation, regulation, ordinance, demand, requisition or requirement of any other act of any governmental authority, national, state or local, including court riders, judgments, or decrees, or any other cause whatsoever, whether similar or dissimilar to those above enumerated, beyond our reasonable control, quantities affected may be eliminated by us from this contract without liability.

Applicable Law

The construction performance and completion of this contract is to be governed by the law of the state from which we ship the goods. To the extent that the provisions hereof may vary from the Uniform Commercial Code of such state or any other jurisdiction, the provisions hereof shall govern.



GENERAL INFORMATION

A unique combination of properties makes aluminum one of our most versatile engineering and construction materials. A mere recital of its characteristics is impressive. It is light in mass yet some of its alloys have strengths greater than that of structural steel. It has high resistance to corrosion under the majority of service conditions, and no colored salts are formed to stain adjacent surfaces or discolor products with which it comes into contact, such as fabrics in the textile industry and solutions in chemical equipment. It has no toxic reaction. It has good electrical and thermal conductivities and high reflectivity to both heat and light. The metal can easily be worked into any form and readily accepts a wide variety of surface finishes.

Lightness is one of aluminum's most useful characteristics. The specific gravity is about 2.7. The mass ("weight") of aluminum is roughly 35 percent that of iron and 30 percent that of copper.

Commercially pure aluminum has a tensile strength of about 13,000 pounds per square inch. Thus its usefulness as a structural material in this form is somewhat limited. By working the metal, as by cold rolling, its strength can be obtained by allowing aluminum with small percentages of one or more other elements such as manganese, silicon, copper, magnesium or zinc. Like pure aluminum, the alloys are also made stronger by cold working. Some of the alloys are further strengthened and hardened by heat treatments so that today aluminum alloys having tensile strengths approaching 100,000 pounds per square inch are available.

A wide variety of mechanical characteristics, or tempers, is available in aluminum alloys through various combinations of cold work and heat treatment. In specifying the temper for any given product, the fabricating process and the amount of cold work to which it will subject the metal should be kept in mind. In other words, the temper specified should be such that the amount of cold work the metal will receive during fabrication will develop the desired characteristics in the finished products.

Aluminum and its alloys lose part of their strength at elevated temperatures, although some alloys retain good strength at temperatures from 400 F to 500 F. At subzero temperatures, however, their strength increases without loss of ductility, so that aluminum is a particularly useful metal for low-temperatures applications.

When aluminum surfaces are exposed to the atmosphere, a thin invisible oxide skin forms immediately, which protects the metal from further oxidation. This self-protecting characteristic gives aluminum its high resistance to corrosion. Unless exposed to some substance or condition that destroys this protective oxide coating, the metal remains fully protected against corrosion. Aluminum is highly resistant to weathering, even in industrial atmospheres that often corrode other metals. It is also corrosion resistant to many acids. Alkalis are among the few substances that attack the oxide skin and therefore are corrosive to aluminum. Although the metal can safely be used in the presence of certain mild alkalis with the aid of inhibitors, in general, direct

contact with alkaline substances should be avoided.

Some alloys are less resistant to corrosion than others, particularly certain high-strength alloys. Such alloys in some forms can be effectively protected from the majority of corrosive influences, however, by cladding the exposed surface or surfaces with a thin layer of either pure aluminum or one of the more highly corrosion-resistant alloys.

A word of caution should be mentioned in connection with the corrosion-resistant characteristics of aluminum. Direct contacts with certain other metals should be avoided in the presence of an electrolyte; otherwise galvanic corrosion of the aluminum may take place in the vicinity of the contact area. Where other metals must be fastened to aluminum, the use of a bituminous paint coating or insulating tape is recommended.

The fact that aluminum is nontoxic was discovered in the early days of the industry. It is this characteristic that permits the metal to be used in cooking utensils without any harmful effect on the body, and today we find also a great deal of aluminum equipment in use by food processing industries. The same characteristic permits aluminum foil wrapping to be used safely in direct contact with food products.

Aluminum is one of the common metals having an electrical conductivity high enough for use as an electric conductor. The conductivity of electric conductor grade (1350) is about 62 percent that of the International Annealed Copper Standard. Because aluminum has less than one-third the specific gravity of copper, however, a pound of aluminum will go about twice as far as a pound of copper when used for this purpose. Alloying lowers the conductivity somewhat, so that wherever possible alloy 1350 is used in electric conductor applications.

The high thermal conductivity of aluminum came prominently into play in the very first large-scale commercial application of the metal in cooking utensils. This characteristic is important wherever the transfer of thermal energy from one medium to another is involved, either heating or cooling. Thus aluminum heat exchangers are commonly used in the food, chemical, petroleum, aircraft and other industries. Aluminum is also an excellent reflector of radiant energy through the entire range of wavelengths, from ultraviolet, through the visible spectrum to infrared and heat waves, as well as electromagnetic waves of radio and radar.

Aluminum has a light reflectivity of over 80 percent, which has led to its wide use in lighting fixtures. Aluminum roofing reflects a high percentage of the sun's heat, so that buildings roofed with this material are cooler in summer. The ease with which aluminum may be fabricated into any form is one of its most important assets. Often it can compete successfully with cheaper materials having a lower degree of workability. The metal can be cast by any method known to foundrymen; it can be rolled to any desired thickness down to foil thinner than paper; aluminum sheet can be stamped, drawn, spun or roll-formed. The metal also may be hammered or forged. Aluminum wire, drawn from rolled rod, may be



GENERAL INFORMATION

stranded into cable of any desired size and type. There is almost no limit to the different profiles (shapes) in which the metal may be extruded.

The ease and speed with which aluminum may be machined is one of the important factors contributing to the low cost of finished aluminum parts. The metal may be turned, milled, bored, or machined in other manners at the maximum speeds of which the majority of machines are capable. Another advantage of its flexible machining characteristics is that aluminum rod and bar may readily be employed in the highspeed manufacture of parts by automatic screw machines.

Almost any method of joining is applicable to aluminum: riveting, welding brazing or soldering. A wide variety of mechanical aluminum fasteners simplifies the assembly of many products. Adhesive bonding of aluminum parts is widely employed, particularly in joining aircraft components.

For the majority of applications, aluminum needs no protective coating. Mechanical finishes such as polishing, sand blasting or wire brushing meet the majority of needs. In many instances the surface finish supplied is entirely adequate without further finishing. Where the plain aluminum surface does not suffice, or where additional protection is required, any of a wide variety of surface finishes may be applied. Chemical, electrochemical and paint finishes are all used. Many colors are available in both chemical and electrochemical finishes. If paint, lacquer or enamel is used any color possible with these finishes may be applied. Vitreous enamels have been developed for aluminum, and the metal may also be electroplated.

Aluminum sheet, because of its superior corrosion resistance and smooth continuous surface, is an excellent base for the high quality paints used in producing painted sheet. The chemical pretreatment plus the application of high quality thermally cured paint assures a finish that will exhibit no cracking, blistering, or peeling. Accidental damage to products made of painted aluminum sheet will not result in unsightly rust areas or streaks. Experiences has show that paint in the quality used for this product, properly formulated, applied and cured, will show little change in color or loss of gloss after one year's service in the adverse climactic conditions of south-central Florida.

Highly industrialized areas may cause some color change due to atmospheric contaminants.

Proper maintenance can extend the service life considerably—even the finest automobiles require occasional washing and polishing if they are to retain their original appearance.

Even after many years of service most advantages of the painted sheet remain. It can be repainted with any good grade of house paint with no danger of cracking or peeling, such as is often experienced when paint is applied to other types of base materials.

Painted sheet and the products made from it should be handled with care to avoid damage to the paint film. Repair of large damaged areas is not recommended, but for repair of small areas air drying touch-up paint intended for brush application is available from paint suppliers. Your painted sheet supplier should be contacted for precise information. This touch-up paint cannot be expected to exhibit the same weathering and other characteristics as the original painted sheet, and touched-up areas will be present appearance differences after weather exposure. For this reason use of touch-up paint should be held to a minimum.

Many types of paint systems are used, and it is difficult to establish reasonable and meaningful standards for all of them. Specific applications require consideration of life expectancy, forming requirements and methods, economics and so forth. Paint systems generally in use exhibit general characteristics as shown on pages 7-31 to 7-33, but for specific applications consult the painted sheet supplier.

These are the characteristics that give aluminum its extreme versatility. In the majority of applications, two or more of these characteristics some prominently into play for example, light weight combined with strength in airplanes, railroad cars, trucks and other transportation equipment. High resistance to corrosion and high thermal conductivity are important in equipment for the chemical and petroleum industries; these properties combine with nontoxicity for food processing equipment.

Attractive appearance together with high resistance to weathering and low maintenance requirements have led to extensive use in buildings of all types. High reflectivity, excellent weathering characteristics, and light weight are all important in roofing materials. Light weight contributions to low handling and shipping costs, whatever the application.

Many applications require the extreme versatility that only aluminum has. Almost daily its unique combination of properties is being put to work in new ways. The metal now serves as a basic raw material for more than 20,000 businesses scattered throughout the country.